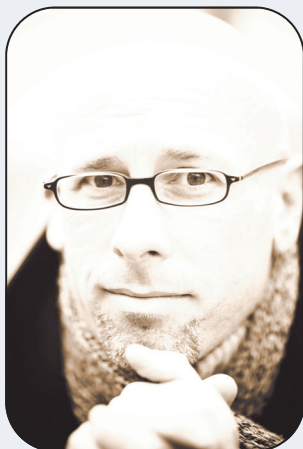


Robbie Schaefer

1/4th of Eddie From Ohio, with songwriting & musicianship that fill the stage



“The folk-pop of Robbie Schaefer has a sweet, old-fashioned quality; his lyrics reveal a mischievous side.”

— *Cookie magazine*

“...here is an artist that finds no need to ‘dumb down’ music for the small people and who can bridge both accessibility and age-appropriate content with solid, well-written, thoughtfully-conceived songs...Schaefer’s style is both fun and silly but at its heart, is driven by quality and integrity.”

— *CD Baby (regarding his songs for children)*

WWW.FLEMINGARTISTS.COM • WWW.ROBBIESCHAEFER.COM • WWW.SONGSFORKIDSLIKEUS.COM

Robbie Schaefer’s mom thinks he’s really great—In case you haven’t spoken with her lately, **Robbie Schaefer** is the guitarist and songwriter for the acclaimed independent folk/rock band **Eddie From Ohio**. Although the indie model has become increasingly common in the music industry, **Eddie From Ohio** actually helped pave the way, building a fan base through relentless touring and grassroots marketing beginning in 1991. Having created a large and loyal following across the U.S. and Canada (the mailing list now tops 25,000 names), the band has also released 9 CDs, selling upwards of 150,000 copies, all on their own Virginia Soul Records.

In recent years **Robbie** has also turned his musical attention toward solo projects, (releasing *In The Flesh*, a live solo album, in 2003), composing and recording the theme song for the theatrical production *Gulf View Drive* (by New York playwright **Arlene Hutton**), which premiered at the Actor’s Co-Op in Hollywood, CA in 2006, and releasing his first CD for kids and families, *Songs For Kids Like Us* on Rocket Pop Records in 2006. The success of *Songs For Kids Like Us* led to a wealth of opportunities for **Robbie**, culminating in his arrival as Music Director at XMKIDS on XM Satellite Radio. His show, “*Robbie Schaefer’s Stuck In A Real Tall Tree*,” airs Monday-Thursday at 7PM (EST) / 4 PM (PST) and Saturdays at 10 AM (EST) / 7 AM (PST).

A new solo studio album is planned for release in late-2008 with **John Jennings (Mary-Chapin Carpenter, John Gorka, Catie Curtis)** producing. **Robbie’s** mom is currently clearing space on her CD rack for the multiple copies she plans to buy.

Lastly, **Robbie Schaefer’s** mom would like you to know that his favorite color is red, his favorite food is sushi, he’s really into yoga and all that woo-woo spiritual stuff, has excellent hygiene, and an affinity for olives and espresso that borders on the abnormal. Oh, and he just adores it when she yells “I love you **Robbie**” at his shows.



FLEMING ARTISTS

167 Little Lake Drive · Ann Arbor, MI 48103 · ph: 734.995.9066 · fax: 734.662.6502